

MURO-PRO-30

Date: 07/2018

| Order Code | Product Code | Description |
|------------|----------------------|--|
| 25059 | MURO-PRO-30-BLK-TRIO | 30W Spotlight, black finish (TRIO) |
| 25060 | MURO-PRO-30-DGR-TRIO | 30W Spotlight, dark grey finish (TRIO) |
| 25061 | MURO-PRO-30-WHT-TRIO | 30W Spotlight, white finish (TRIO) |

Thank you for purchasing your new LED MURO-PRO-30, Please take the time to read and understand the instruction sheet below. Failure to do so may void warranty.

Specifications

| | | | | | |
|---------------|--------------|-----------------------|---|-----------|----|
| Voltage: | 240V 50Hz | Lumen ($\pm 10\%$): | Warm White 3000K - 1900lm Neutral White 4000K - 2100lm White 5000K - 2000lm | Dimmable: | No |
| Power: | 30W | Beam Angle: | 120° | | |
| IP Rating: | 54 | CCT: | 3000K - 4000K - 5000K (Switchable) | | |
| CRI: | ≥ 80 | Lifespan: | 30,000hrs | | |
| Maximum load: | 2x15Watt LED | | | | |

To achieve best results, we suggest you take into account the following points:

- Not mounting at the vibrational surface.
- Ideally, the light should be mounted 1.5 to 2.5 metres (6 to 8 ft) above the ground

This light is for outdoor use and only intended for normal use, must not be used for rough service (for example, on construction sites).

The light source of this luminaires is not replaceable; when the light source reaches its end of life the whole luminaire must be replaced.

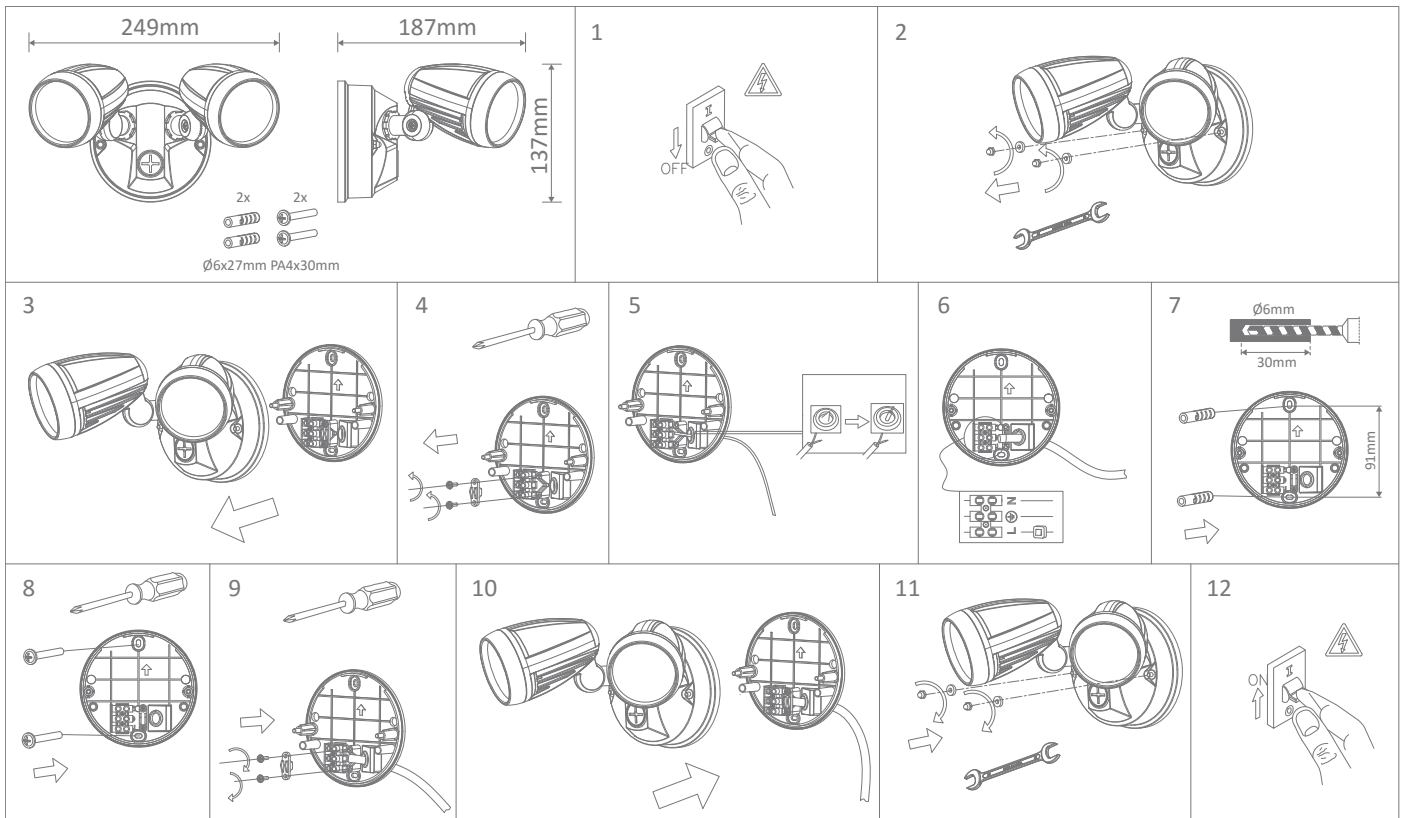
Installation

1. Installation by a licensed electrician and according to IEC wiring Regulation.
2. Switch power off at the meter box and ensure that there is no power to the lamp.
3. Unscrew the Fixing Cover Screws then remove the cover.
4. Remove the Cable Anchorage and Terminal Block.
5. Use the plastic back box to mark the position of screw holes onto mounting surface. Drill the wall to depth of about 4 cm and fit the wall plugs (supplied). Care should be taken to avoid drilling or screwing into concealed electrical wiring.
6. Connecting the Power Cable to the Terminal Block, see the relative symbol in Fig. 2, ensure the cable must drill through the Cable Gasket.
7. Affix the back box to the mounting surface with Mounting Wall Screws (supplied).
8. Re-fit the Terminal Block and Cable Anchorage.
9. Re-fit the cover.

Note:

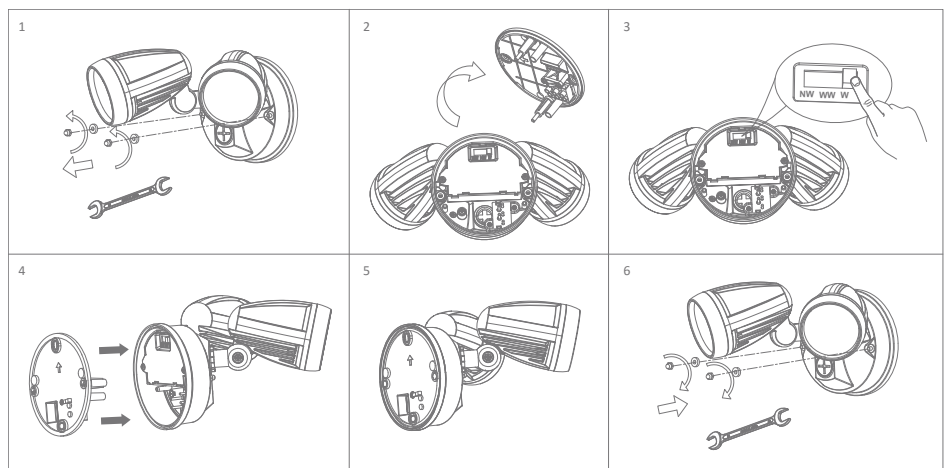
- Please power off and let the lamp cool before touching the lamp(s), because they will become hot during lighting on.
- Loosen lock nuts and screws on sensor and lamp before making any adjustments.
- Multiple (More than one) Muro fittings must not be wired to a separate sensor.
- Multiple Muro Fittings cannot be wired to a single switching point.

Installation Manual



Change the Color Temperature

1. Unscrew the Fixing Cover Screws then remove the cover
2. Change the Color Temperature at back of the light
W: 5000K
NW: 4000K
WW: 3000K
3. Re-fit the cover.
4. Mount light onto the wall



Note: -The lamp must be installed by professional electrician
-Ensure the power supply is switched off before fitting this product

-Do not touch the lamp when in use
-Keep away from hot steam and corrosive gas